



# The Well Diagnosis Company

EV is the global market leader in downhole video technology, and specializes in providing Well Diagnosis services to major Oil & Gas operators around the world.

Having originally gained acclaim in its early days for engineering ruggedized cameras ideal for mounting on racing cars and for televising extreme sports. In 2004 EV applied this expertise and know-how to develop an advanced telemetry and diagnostics video system to identify problems in oil and gas well completions in the North Sea. Starting with its 1<sup>st</sup> generation RT120 and a team of experienced field engineers, EV has since grown its global foot print by delivering consistently reliable, high-quality images where previously, other video camera applications had faltered.

EV Technology Centre in Norwich (United Kingdom), home to EV's R&D Group, develops, designs and manufactures Optis™, the most advanced downhole video camera systems in the Oil & Gas industry. Thanks to EV's proprietary 300 kbps telemetry, surface controlled LED lighting, and unique image processing software, Optis™ can transmit real-time, full color video at up to 25 fps.

Thorough job planning and well preparation allows EV field engineers to provide its customers with over 1,200 runs per year of video based services with 95% success ratio, delivering crystal clear, fully detailed images of downhole problems, completion features and well conditions, that eliminate any guess work and enable accurate first-time diagnosis.

With more than 25 years of Research and Development in video technology behind it, and an annual investment of 10% of its global revenues in new technology projects, EV is also gaining rapid acclaim for its work in downhole sensor integration with downhole video cameras that offer its customers an expanding portfolio of comprehensive, detailed answer products.

EV currently operates from over 20 locations distributed between the North Slope of Alaska to New Zealand.

## Global Headquarters

### Products

- Optis™ RT120 - Drill pipe, tugger line or umbilical conveyed memory camera
- Optis™ VDrift – Drift run compact ruggedized camera
- Optis™ Slickline HD – Slickline battery powered memory camera
- Optis™ Electric Line – Mono or multi conductor cable conveyed B&W camera
- Optis™ Electric Line HD – Mono or multi conductor cable conveyed full color camera
- Optis™ Memory Coil – Coil Tubing, Battery powered memory full color HD camera
- Optis™ Electric Coil – Electric Line Coil Tubing conveyed, full colour, real-time camera
- Optis™ Fibre Coil – Fiber Optic Coil Tubing conveyed, full colour, real-time camera
- Optis™ VMPL – Temperature, pressure, CCL, gamma ray, in-line flowmeter, full color camera combo
- Optis™ IVC – Multifinger caliper, full color HD camera combo



EV Technology Centre  
19 Frensham Road  
Sweet Briar Industrial Estate  
Norwich NR3 2BT  
United Kingdom

T +44(0)1603-216900  
sales@evcam.com

[www.evcam.com](http://www.evcam.com)

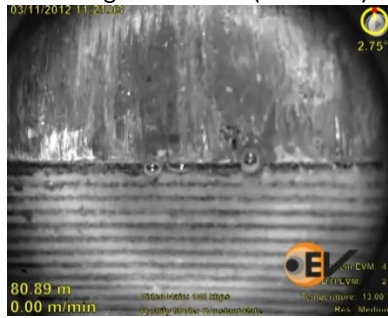
## General Applications

- Well integrity
- Obstruction diagnosis
- Fishing evaluation
- Mechanical inspection
- Pre and post Milling damage assessment
- Pre and post Scale clean-up appraisal
- Pre and post Fracking
- Production enhancement
- Water, gas, oil or sand entry detection
- Scale, salt or hydrate identification

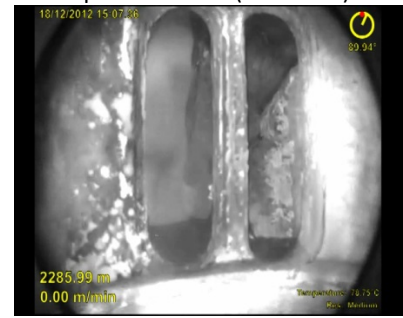
Wireline Fish (down view)



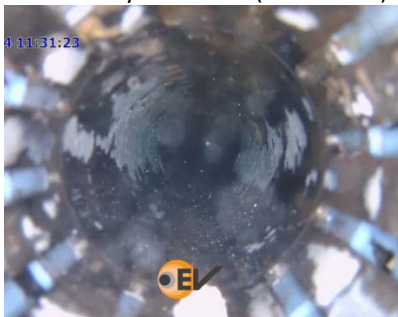
Leaking Connection (side view)



Open Frac Port (side view)



Sand Entry Detection (down view)



Sand Screen Collapse (down view)



Hydrates in Gas Well (down view)



Application Video Library on [www.evcam.com/case-studies](http://www.evcam.com/case-studies)

Canada  
+1(403)263-6144

Continental USA  
+1(281)492-1300

USA Gulf of Mexico  
+1(337)330-4045

Colombia  
+57-313-343-7821

United Kingdom  
+44(0)1224-822555

Norway  
+47-519-51600

Nigeria  
+234-8096-304261

India  
+91-22-261-02934

Kingdom of Saudi Arabia  
+966-505-123-713

United Arab Emirates  
+971-432-7400

Sultanate of Oman  
+968-914-04920

Azerbaijan  
+944-50-543-2266

Malaysia  
+603-217-11841

Indonesia  
+62-812-330-93112

Australia  
+61-433-564063

New Zealand  
+64-21-827157